

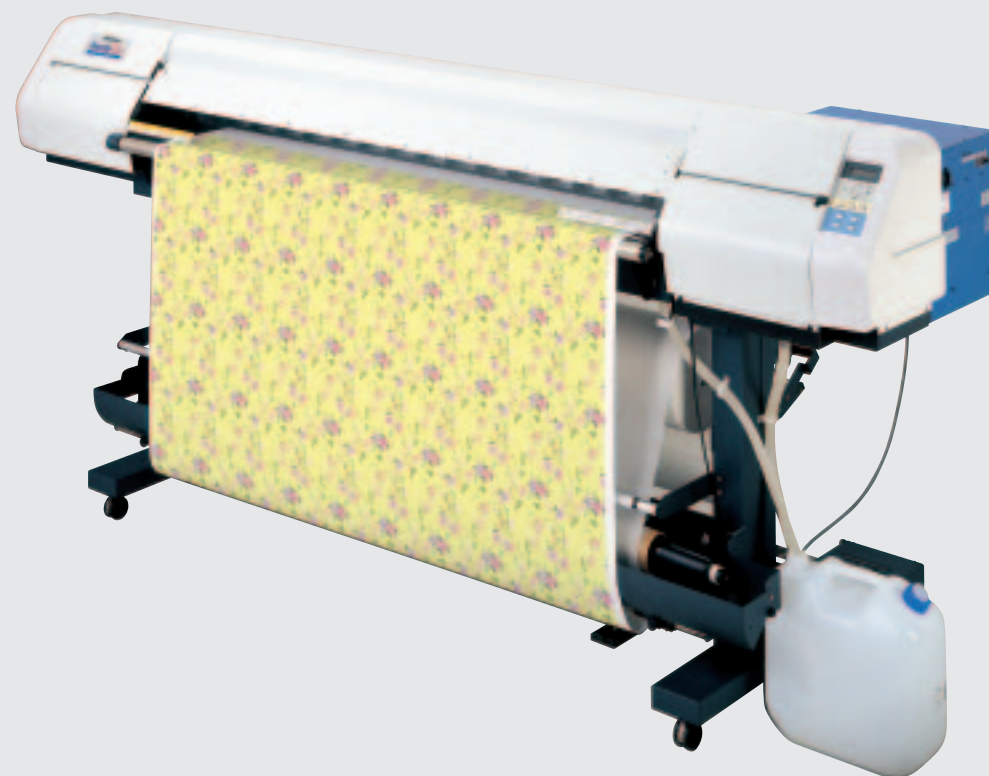
Digital Printing from Sample Creation

to Small Lot Production ...

Standard Model of Digital Printing to Textile

Enabling 28.4m²/h High-Speed

and 720dpi High-Quality Printing Is Born



Textile Jet
Tx2-1600

Maximum print width: 1620mm(63.78)
Maximum fabric width: 1650mm(64.96")

*Waste ink tank is not supplied.



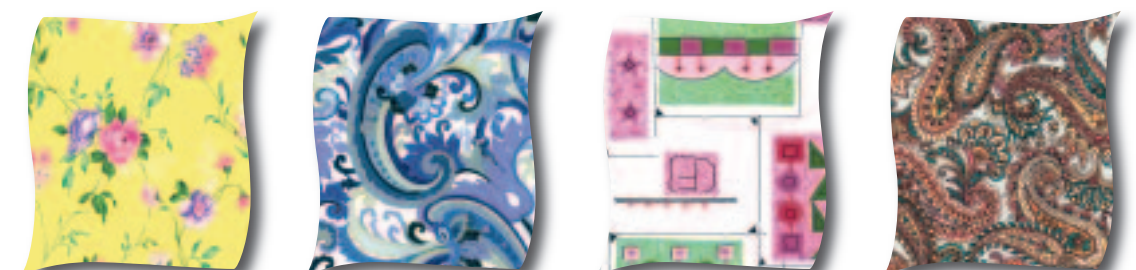
8-Color Multi-Head Enabling Switching Between 1-Way and 2-Way Print Modes



360dpi 28.4m²/h High-Speed Mode and 720dpi 10.5m²/h High-Quality Mode



Basic Application Software Enabling Design, Color Arrangement, and Printing Provided as Standard



8-Color Ink Realizes Accurate Sharp Color Reproduction

Tx2-1600 can mount ink variations for a total of 8 colors including 4 basic colors(CMYK)and 4 special colors. Ink that suits your application can be selected from reactive, acid and disperse dye ink variations.

- R Reactive Dye Ink
- A Acid Dye Ink
- D Disperse Dye Ink

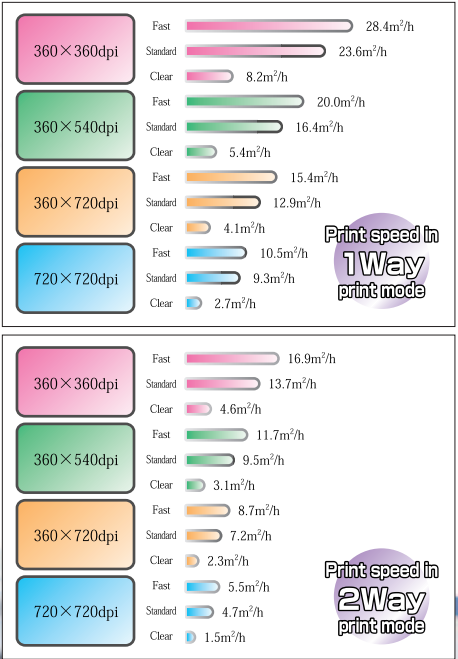
8-Color Multi-Head Enabling Switching Between 1-Way and 2-Way Print Modes

Tx2-1600 employs a 8-color multi head with the front- and rear-rank stagger arrangement. The front- and rear-rank heads are an independent ink supply system, allowing selection of the 1-way print mode mounting ink of the same type and color or the 2-way print mode mounting ink of different types and colors.

High-Speed Printing Realizing High Performance

The newly developed high-speed print head achieves a print speed about up to 5 times(compare to MIMAKI TX-1600S in 1-way print mode), dramatically increasing potential abilities of the digital plotter to textile, from sample creation to small lot production.

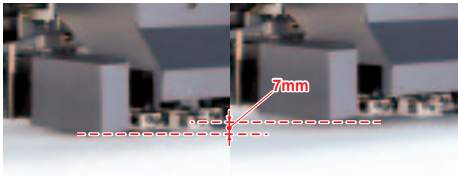
*In-house comparison in 1-Way print mode.



*Print Width: 1600mm, Bi-Directional
*Print resolution and print speed may be restricted according to the kind of fabric, and the state of a pretreatment.

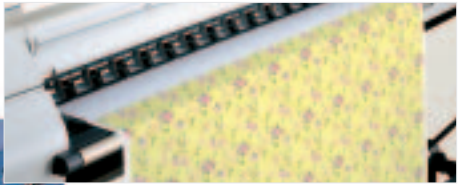
Head-Height Adjustment Mechanism Enabling Printing for Up to 7mm Thickness

The head-height adjustment mechanism enabling plotting to thick cloths allows stepless adjustment for up to 7mm thickness. Tx2-1600 is provided with the position stick which easily determines the head height position.



Unique Feed Mechanism

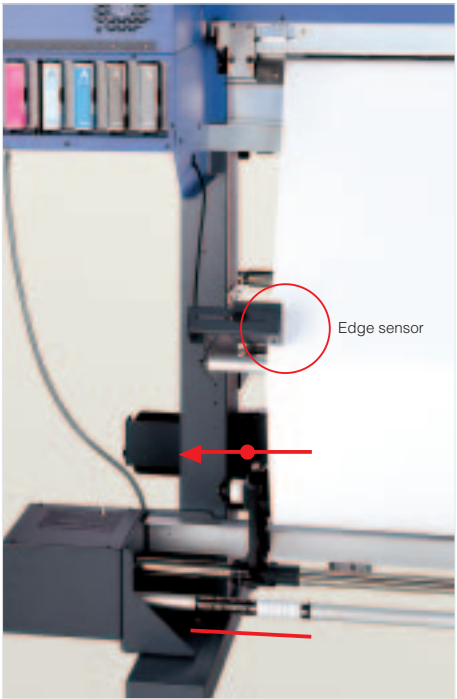
The drive roller and friction roller allow a constant tension of Fabric, enabling plotting to Fabrics without any liner sheet(backing sheet). Ink penetrating the fabric is received by the ink ditch to allow plotting to a coarse-textured fabric. The Fabric Retainer for holding both edges of the fabric prevent contact of the fabric and print head.



- * The Fabric Retainer is applicable to up to 5.5mm thickness.
- * The ink ditch can be washed with water.
- * Waste ink and washed-up ink in the ink ditch is collected in the waste ink tank.

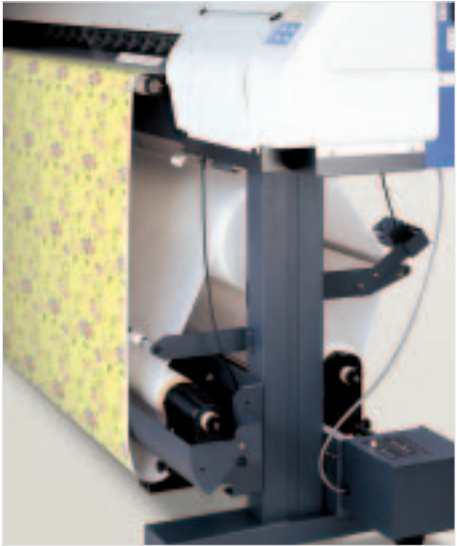
Anti-Meandering Loading Device

Tx2-1600 employs the Loading device which minimizes meandering of the cloth by detecting the edge of a roll Fabric with an edge sensor and moving it from side to side. Stable fabric feed is possible even if the edge of the roll fabric is not aligned.



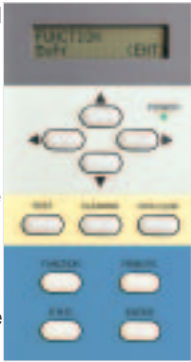
Automatic Take-Up Device as Standard

Tx2-1600 is provided with Automatic take-up device as standard which takes up the print fabric with a constant tension, realizing night operation and other unattended plotting. Tx2-1600 is also provided with additional roll holder for setting a slip sheet for preventing ink penetration.



Easy-to-Use Operation Panel

The 2-row display panel with a back light is employed to provide legible and substantial information display in any environment. To improve operability, the TEST, CLEANING, and DATA CLEAR keys frequently used are arranged at the top of the key layout.



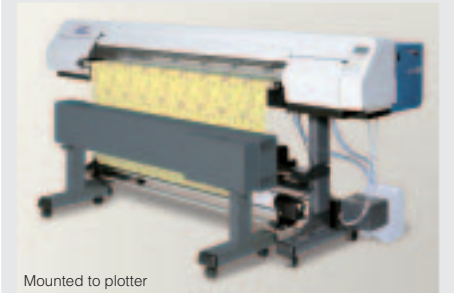
IEEE1394 Port Enabling High-Speed Communication

The IEEE1394 port is equipped as an interface for data reception from a personal computer. This interface realizes high-speed large-capacity data transmission without reducing the throughput even while Tx2-1600 is plotting with the highest speed.



Optional Dryer for Promoting Ink Dryness after Printing

The optional drying device maintains a constant temperature of the surface of the plotted fabric to promote ink dryness after printing. It allows ink to dry safely and securely.



TxLink - Basic Application Software Enabling Design, Color Arrangement, and Printing Provided as Standard

TxLink Design

Standard software

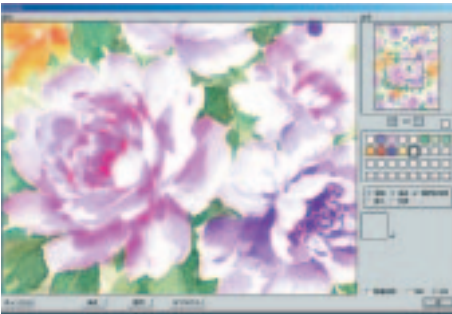


Standard software is plug-in software which supports efficient textile design using Adobe Photoshop. Multi-platform configuration allows the software to be used in both the Windows and Macintosh environments.

* Adobe Photoshop is required to use TxLink Design.

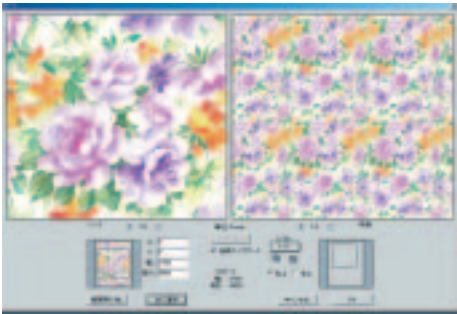
Mimaki Arch Color

Mimaki Arch Color is a plug-in software used to make up a scanned full-color image to the necessary number of colors. The software is provided with diverse specialized tools which enable noise elimination, color change, and other image modifications and the contrast display function which allows image modification while displaying the original image.



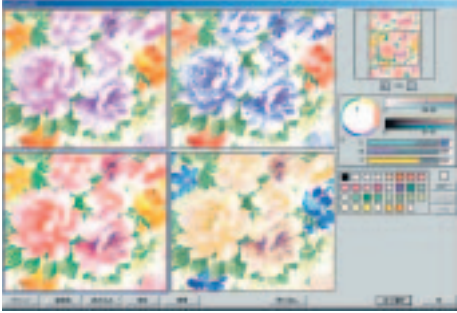
Mimaki Repeat Pro

Mimaki Repeat Pro is a plug-in software used to create a repeat pattern. This software allows you to select an image in whole or parts and modify it while displaying the repeat result with any desired step size (1/1, 1/2, 1/3, or 1/4). In addition, it allows you to open another image for image combination and paste character data on the image.



Mimaki Color Ensumble

Mimaki Color Ensumble is a plug-in software used to simulate a color arrangement plan on the screen. The color arrangement can be determined using the control bar of the RGB/CMY/HSB color models, and the split display screen helps create four color variations at one time. Images with determined color arrangement can be plotted on a general color printer and can be used for presentation.



TxLink Color Book

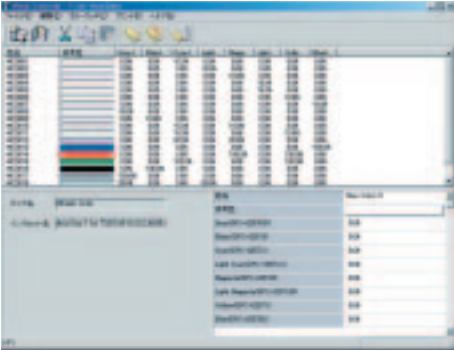
Standard software



Color substitution file generation software which is used to register the original colors to color books and make plotting with different color arrangements.

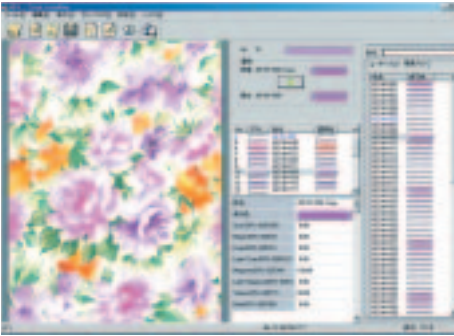
TxLink Book Editor

TxLink Book Editor is used to create original colors to be plotted to the Tx2-1600 and register them to your own color book. The ink amount specification method is employed as the original color creation method, allowing all-out color arrangement by blending 100% black ink and other ink.



TxLink Color Book

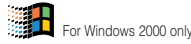
TxLink Color Book is color substitution file generation software used to make plotting with different color arrangements. This software displays the patches for the number of colors used for design and allows you to specify the combination of color arrangement by assigning substituted colors to each patch. For specification of substituted colors, the standard color can be used in addition to the original colors created using TxLink Book Editor.



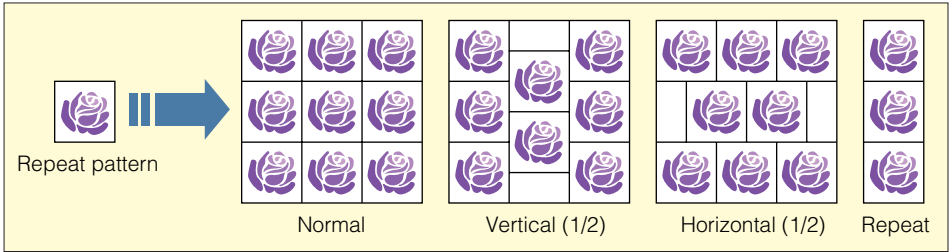
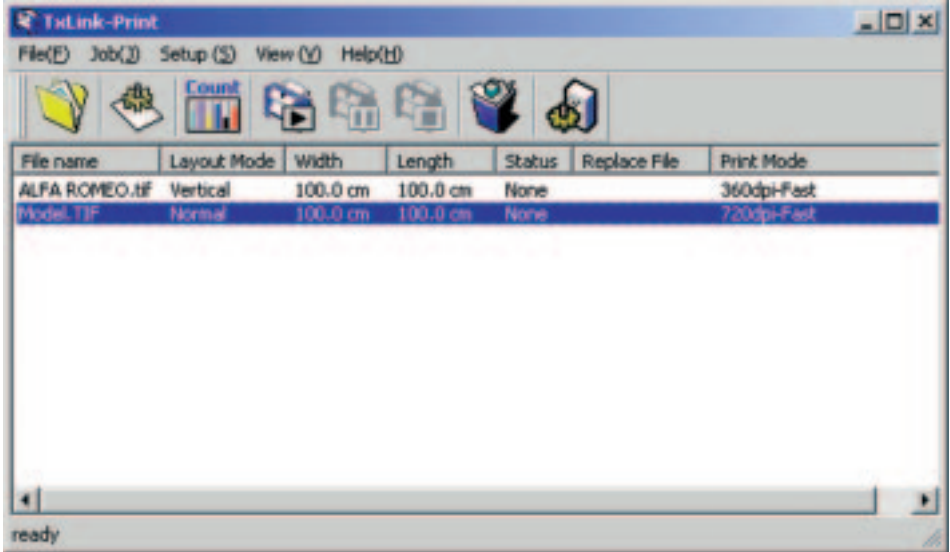
Tx2-1600, an entry-level model plotter providing basic functions for digital plotter to textile, is provided with basic TxLink application software supporting design, color arrangement, and printing as standard.

TxLink Print

Standard software



Software used to plot design data to Tx2-1600



Major Features

- Repeat pattern plotting on a long sheet with step specification
- Calculation of ink consumption for each image
- Simultaneous plotting function for nozzle check pattern at edge and image allows detection of missing dots during plotting
- Folder monitoring function enabling automatic plotting through image transfer from a client
- Color management function in compliance with ICM2.0
- Applicable to High-speed data transfer through IEEE1394 port



Applicable File Formats

TIFF, JPEG, BMP

* Applicable color modes are RGB 24-bit full color and RGB 256 colors.

Layout Setup

Enlargement/reduction ratio, arrangement copy, mirror image
Step specification: None, normal, horizontal (1/2, 1/3, 1/4), vertical (1/2, 1/3, 1/4), repeat
Output size: Any size (The finish size at the time of step specification can be set.)

TxLink CCM

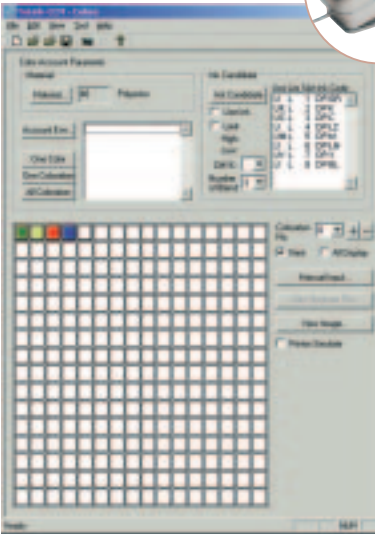
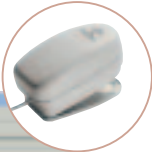
Option System



This system is a computer-based color matching system which scans sample cloths, color patches, and other target colors with a spectrophotometric colorimeter and automatically calculates the amount of blended ink for the inkjet plotter for direct plotting to textile. To realize color matching which best suits the print cloth used, basic color data can easily be added and registered for automatic calculation.

- System Configuration
 - Basic data registration software
 - ... TxLink Profile
 - Automatic color matching software
 - ... TxLink CCM
 - Supported colorimeter
 - ... X-Rite DTP22, Gretag, Spectrolino (Colorimeter is not included)

* TxLink Print is required to make printing using TxLink CCM.



■ Specifications

Items		Specifications	
Heads	Type	Piezo electric drop on demand	
	Height	180 Nozzle x 8 colors x 2 line staggered layout	
	Pass	Stepless adjustable Max. 7mm	
Printing mode *1	Direction	2 / 3 / 4 / 6 / 8 / 12 / 16 pass	
	Scan Speed	Uni / Bi Direction	
	Resolutions	Normal / High	
	Printing accuracy	Distance accuracy	720 x 720, 360 x 720, 360 x 540, 360 x 360 (dpi)
Inks	Perpendicularity	Absolute: ±0.3mm(0.118") or 0.3% whichever is greater ±0.5mm / 1000mm (±0.02" / 139.4")	
	Type	Reactive Dye / Acid Dye / Disperse Dye	
	Quantity	16 cartridges	
	Supply	Tube from Ink cartridge to head	
	Capacity	Ink End detection	
			220cc±5cc / cartridge
		Usable amount 200 cc per one cartridge	
Max print size		1620mm(64inch)	
Media	Size	Max. 1650mm / Min. 200mm	
	Set Method	Manual by Media Set Lever	
	Print Face	Face In / out	
	Diameter	Max. 180mm	
	Core	Core Dia.3inch(76.2mm) / 2inch(50.8mm) / 1.5inch(38.1mm)	
	Weight	Max. 15kg	
	Type	Cotton / Silk / Polyester(Pre-Treatment) *2	
Take-up device		Motor controled automatic media take-up device	
Interface		IEEE-1394 / IEEE-1284	
Power		AC100V - 240V +/- 10% (Automatic change) 50/60 Hz +/- 1 Hz	
Power consumption		Less than 500VA	
Operational environments	Acceptable	5℃~30℃	
	Relative humidity	35~65%Rh(No condensation)	
	Temperature	18℃~25℃	
	Grade temperature	Less than ±10℃/h	
Weight	Dust	Office Level	
Dimension		Less than 150kg	
	Width	2750mm	
	Depth	710mm	
	Height	1320mm	

*1 : Some combinations of Pass, Direction, Scan Speed, Resolutions are not supported
*2 : The fabric after print needs post-processing of steam, washing, etc. The fabric of intense of expansion with moisture and of coarse can not be used.
*Subject to modify specification of TX2-1600 for improvement without notice

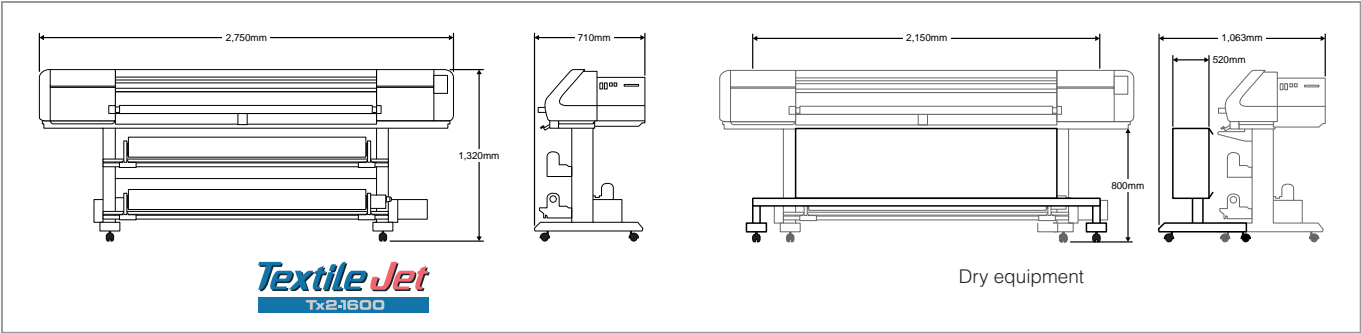
■ Dryer

Item	Specifications
Temperature	Over 60℃ on surface of fabric
Input Power	100 - 120 V ±10% 50/60Hz±1Hz
Power Consumption	200 - 240 V ±10% 50/60Hz±1Hz
	1.2KVA / 100V
Weight	1.6KVA / 200V
	54kg
Dimension	2150mm(W) x 520mm(D) x 800mm(H)

■ Ink Cartridges

Discriptions	
Reactive Dye (Coming Soon)	
Acid Dye SPC-0268C Cyan	Acid Dye SPC-0268LM Light Magenta
Acid Dye SPC-0268M Magenta	Acid Dye SPC-0268LC Light Cyan
Acid Dye SPC-0268Y Yellow	Acid Dye SPC-0268BL Blue
Acid Dye SPC-0268K Black	Acid Dye SPC-0268GR Grey
Disperse Dye SPC-0269C Cyan	Disperse Dye SPC-0269LM Light Magenta
Disperse Dye SPC-0269M Magenta	Disperse Dye SPC-0269LC Light Cyan
Disperse Dye SPC-0269Y Yellow	Disperse Dye SPC-0269BL Blue
Disperse Dye SPC-0269K Black	Disperse Dye SPC-0269LBL Light Blue
Disperse Dye SPC-0269GR Grey	

■ External Dimensions



All trade marks or registered trade marks
are the property of the respective owners

DISTRIBUTOR:

DEALER:

MIMAKI ENGINEERING CO.,LTD

TKB Gotenyama Bldg. 5-9-41 Kita Shinagawa, Shinagawa-ku, Tokyo 141-0001, Japan
Phone:+81-3-5420-8671 Fax:+81-3-5420-8687 URL://www.mimaki.co.jp



Inkjet Plotter for Digital Printing to Textile

Textile Jet

Tx2-1600

